



# MAIZE INDUSTRIAL PARK DEVELOPMENT SITES

FOR SALE OR  
BUILD TO SUIT



**InSite**  
REAL • ESTATE • GROUP

**CONTACT**  
608 W DOUGLAS AVE  
INSITERE.COM | 316-618-1100

**CURT ROBERTSON**  
crobertson@insitere.com  
D 316 221 8500 | M 316 650 2838

**DAN UNRUH, CCIM**  
danunruh@insitere.com  
D 316 221 8501 | M 316 650 2081

# PROPERTY INFO



## SALE PRICE

See Agent



## TOTAL ACRES

79 Acres



## SITES AVAILABLE

15 to 79 Acres



## AREA NEIGHBORS

- Kyodo Yushi Manufacturing
- Bayer Crop Science
- Worthington Industries
- Shuttle Aerospace
- Reiloy USA
- Aero-Tech Engineering Inc
- Kwik Shop
- New Market Square
- Menards
- Sam's Club



## ZONING

Limited Industrial



## DEVELOPMENT

Sites for Sale or Build to Suit



## UTILITIES

Water: City of Maize

Groundwater: Site qualifies for an estimated 26+ acre feet of groundwater available for industrial use

Electric Service: Evergy

Natural Gas: Black Hills Energy



## HIGHLIGHTS

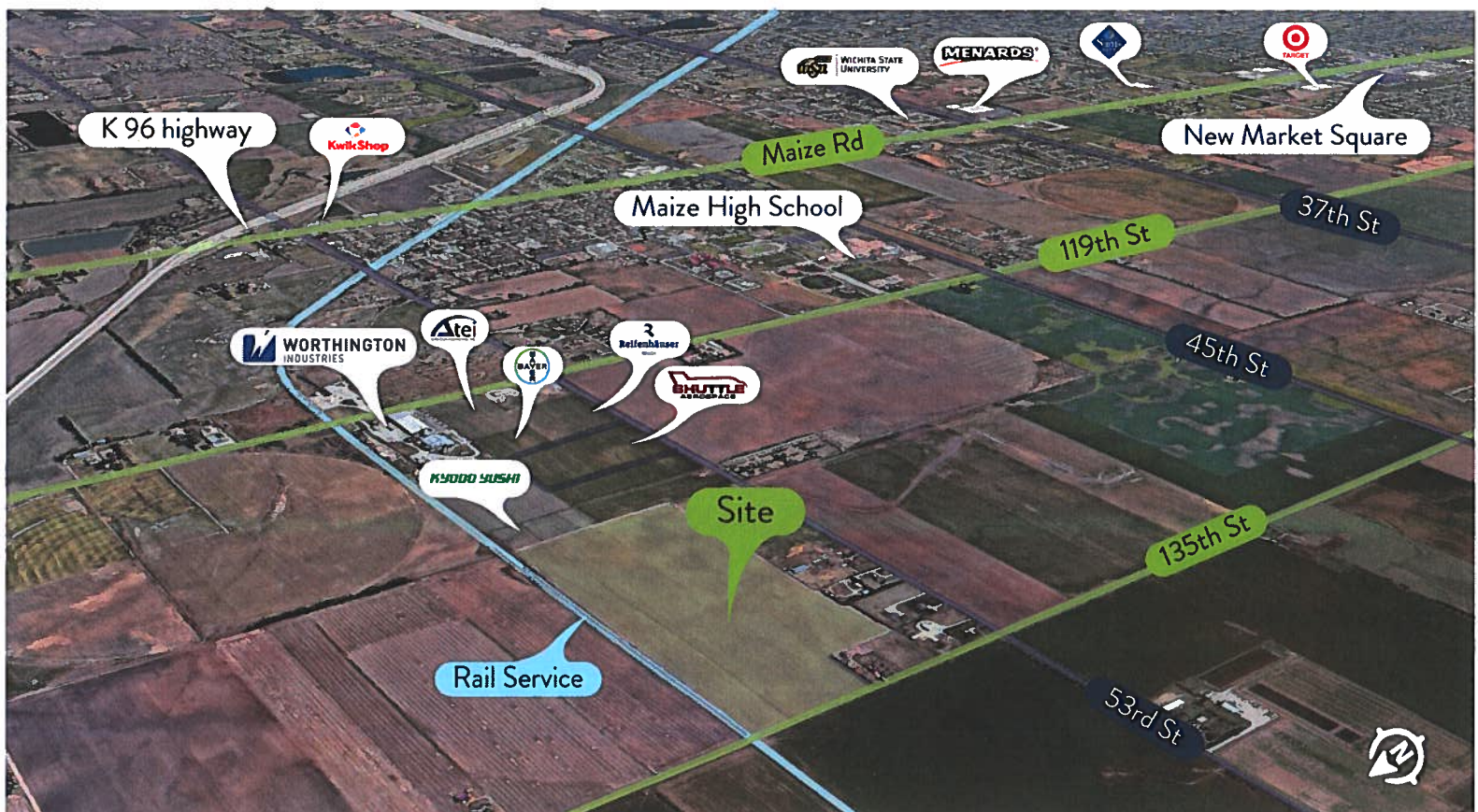
- Rail Service
- Close to K-96 Expressway
- Development Incentives Available Through the City of Maize

**CURT ROBERTSON**

[crobertson@insitere.com](mailto:crobertson@insitere.com)  
D 316 221 8500 | M 316 650 2838

**DAN UNRUH, CCIM**

[danunruh@insitere.com](mailto:danunruh@insitere.com)  
D 316 221 8501 | M 316 650 2081

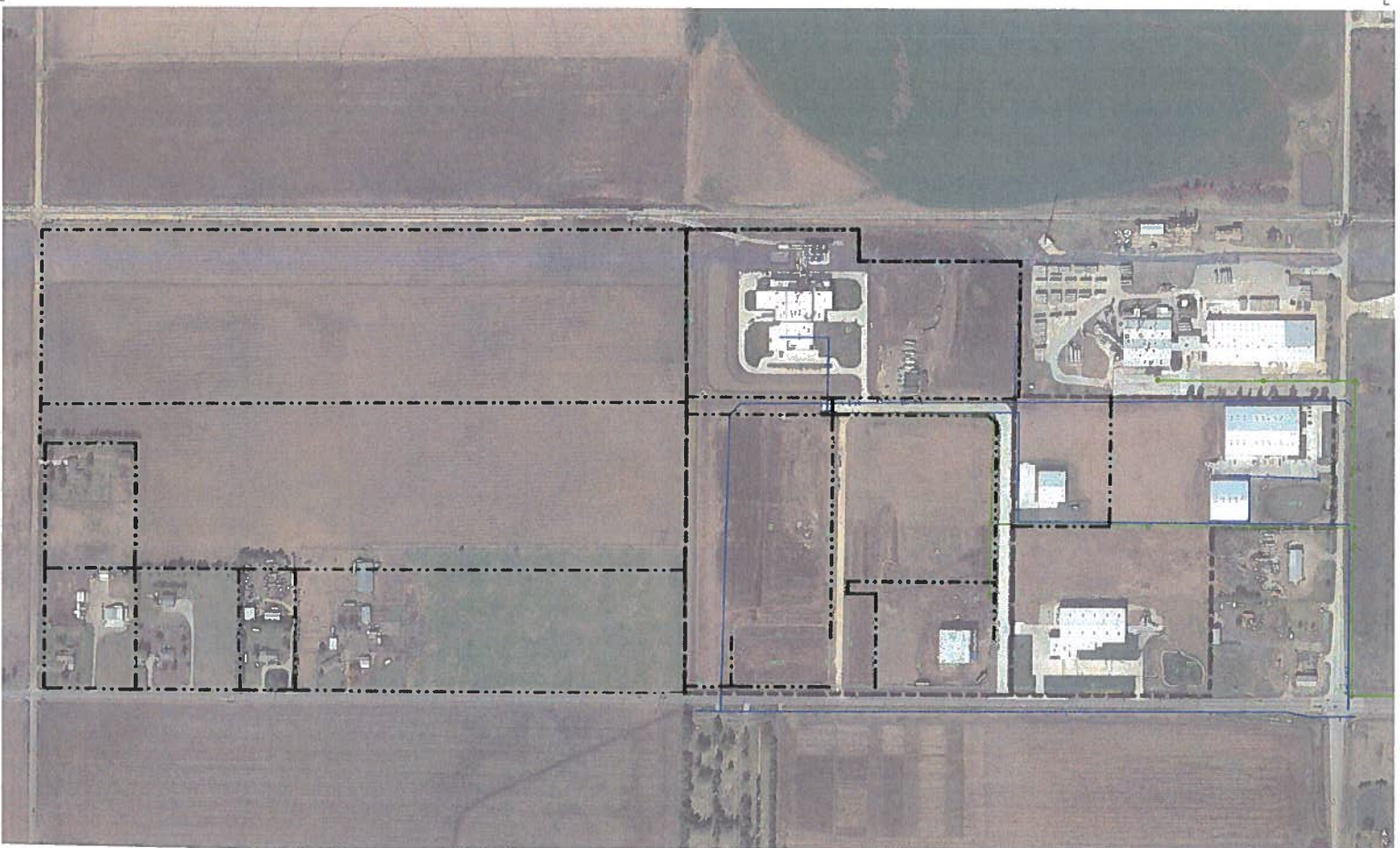


# UTILITIES



## UTILITIES ADJACENT TO SITE

- Water: City of Maize
- Groundwater: Site qualifies for an estimated 26+ acre feet of groundwater available for industrial use
- Electric Service: Evergy
- Natural Gas: Black Hills Energy



A SITE PLAN  
1" = 100'

MAIZE INDUSTRIAL PARK SITE PLAN

HUTTON

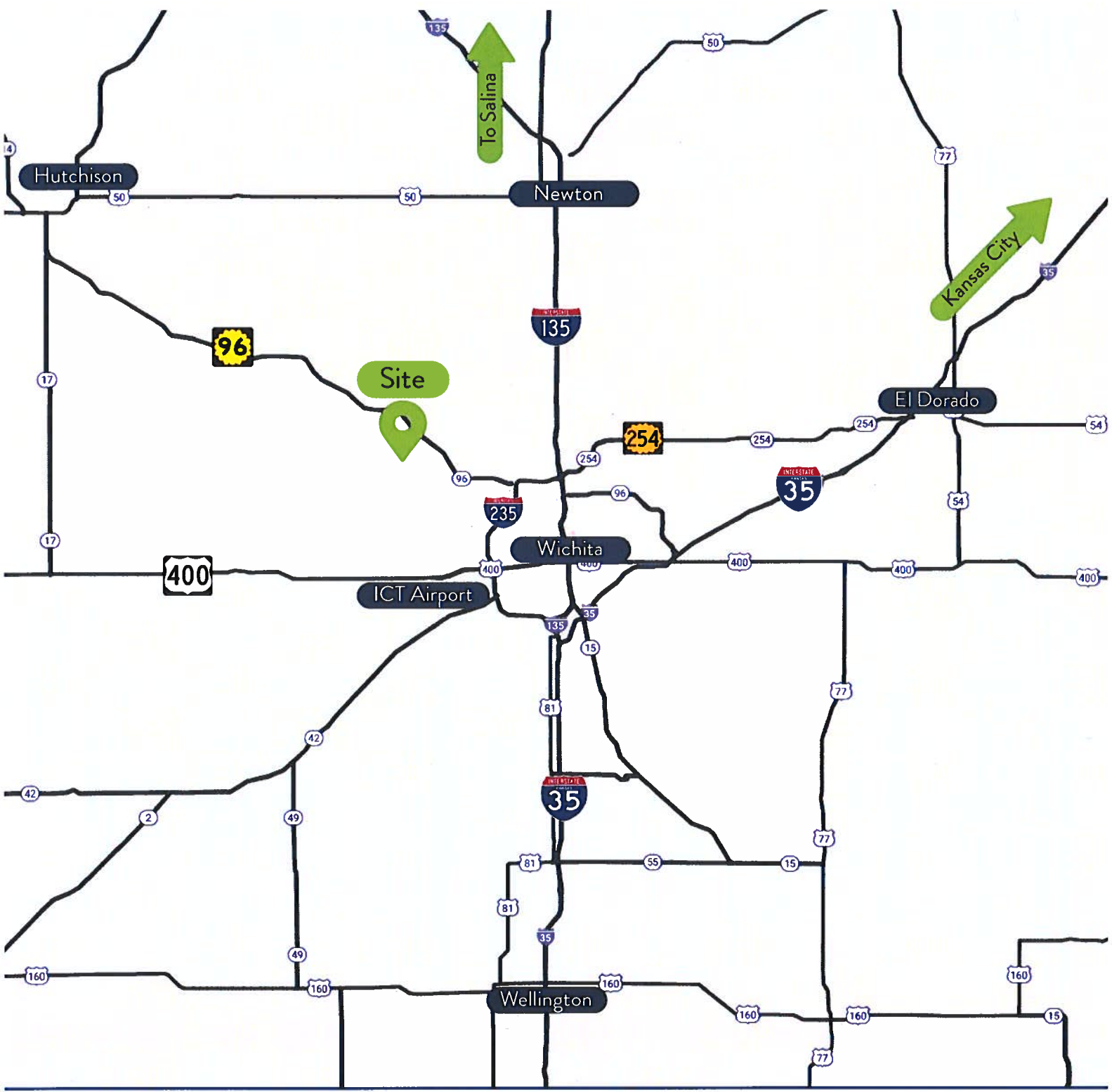
**InSite**  
REAL • ESTATE • GROUP

**CONTACT**  
608 W DOUGLAS AVE  
INSITERE.COM | 316-618-1100

**CURT ROBERTSON**  
crobertson@insitere.com  
D 316 221 8500 | M 316 650 2838

**DAN UNRUH, CCIM**  
danunruh@insitere.com  
D 316 221 8501 | M 316 650 2081

# REGIONAL MAP



**CONTACT**  
608 W DOUGLAS AVE  
INSITERE.COM | 316-618-1100

**CURT ROBERTSON**  
croberson@insitere.com  
D 316 221 8500 | M 316 650 2838

**DAN UNRUH, CCIM**  
danunruh@insitere.com  
D 316 221 8501 | M 316 650 2081